

CH4390 Wireless Sensor Module

DESCRIPTION

The Cermetek CH4390 900 MHz modular radio retrieves wireless sensor data. Patented SensorOnAir technology permits the CH4390 to remotely retrieve data from individual sensors and manipulate control lines. The CH4390 provides access to 5 dedicated analog inputs and 12 programmable I/O pins.

The CH4390 incorporates a proprietary mesh networking protocol. This protocol was developed in corporation with Sandia Laboratories and supports point-to-point, star and tree networks. Any CH4390 can be configured as a Network Coordinator, Router or Endpoint. Configuration is accomplished through simple Text commands entered into the serial port.

The CH4390 includes FCC Part 15 modular certification. No license is required for customers who design this module into their systems.

MODELS

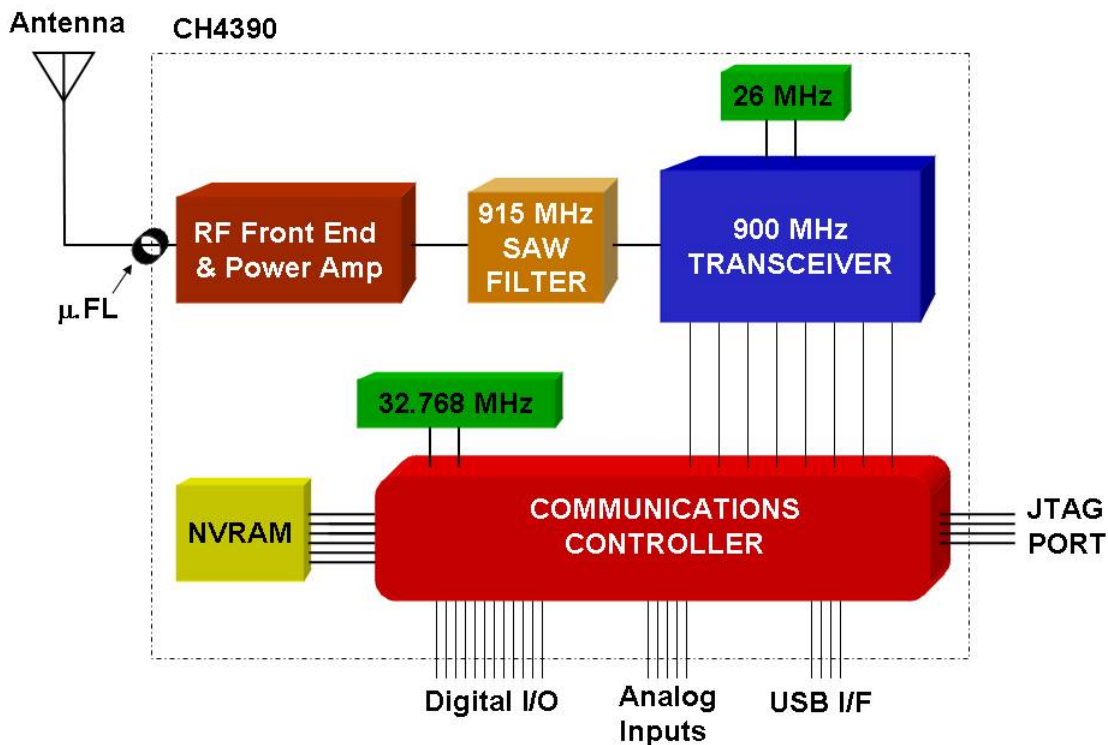
CH4390 900 MHz; Frequency Hopping Module; Operating Temp 0°C to 70°C

CH4390 ET 900 MHz; Frequency Hopping Module; Operating Temp -40°C to 85°C

FEATURES

- Small Size: 50 mm by 20 mm by 5 mm high
- SensorOnAir allows sensors to be connected to Endpoint or Router nodes to be read remotely from the Network Coordinator.
- 5 Dedicated, 12-bit Analog Inputs
- 12 Programmable I/O lines
- Control & configuration via ASCII text commands issued through the serial interface
- Serial data rates from 1200 to 115,200 bps
- Low Power operation; 3.3 Volts, 110 mA during transmission, 20 mA in receive mode
- Output Power 300 mW
- Receive Sensitivity -110 dBm
- Maximum Range, Line of Sight - 2 Miles
- RoHS compliant

Figure 1: Functional Block Diagram of CH4390



CH4390 DESIGN NOTES

The following design notes are intended to assist the developer in achieving maximum utility from the CH4390. A typical connection diagram is included on page 10.

Power Supply: The CH4390 module utilizes sensitive high frequency electronics. The CH4390 divides the 900 MHz Frequency band (902 to 928 MHz) into 64 distinct channels to spread the power over the entire frequency band. This frequency hopping scheme allows higher transmitted power than would be possible with a single carrier frequency. Even with this higher signal power received signal strength can still be very low making demodulation difficult. Steps must be taken by the user to guarantee that power supply noise on all supply lines, including ground, does not exceed 50 mV peak to peak. Dedicated power and ground planes are essential for good results. Failure to provide such operating conditions could cause the CH4390 to malfunction or to function erratically.

The CH4390 requires a single +3.3V ± 0.3 volt supply. It is recommended that by-pass capacitors be placed on the power supply as close to the modem's supply input as practical. Cermetek recommends a 10 µF Tantalum capacitor in parallel with a 0.01 µF ceramic capacitor.

Non-Volatile RAM (NVRAM): The CH4390 incorporates NVRAM to store the configuration profile. The **AT&W** command will store the active settings of The **Bx, Kx, Mx, Nx, Px, Ux, and AT&D** commands.

FCC Part 15 Certification: The CH4390 includes FCC Part 15 modular approval. The FCC ID Number is B46CH4390. This permits operation in the United States with no license.

Sensor Inputs/Control Outputs: The CH4390 employs five dedicated Analog Inputs and 12 programmable Digital Inputs/Outputs. The Analog Inputs, **ADO, AD1, AD2, AD3, and AD4**, have 12 bit resolution. These inputs are referenced to the Vref input to the CH4390. The Digital Input/Output lines are defined as inputs or outputs by the user with the **AT&D** command. These input and output lines can be used when the CH4390 is configured as an Endpoint or a Router.

SensorOnAir: This patented technique allows the reading of remote sensor values or setting remote outputs with a single command. No micro-controller or other intelligence or intervention is required at the sensor node.

The command **AT#PmUnR** is used to read the remote sensor values at the Endpoint or Router defined by PCN "m" (Parent Channel Number) and Unit ID "n." When this command is issued the Endpoint returns the values of all of the sensors as a string of hexadecimal codes, see below. The ".R" prefix indicates that the sensor readings follow.

```
.R 0067 09,36, 09,54, 09,94, 09,63, 09,A3, 0A, P3
   |    |    |    |    |    |    |
   UID  ADC0  ADC1  ADC2  ADC3  ADC4  P1  P3
```

The command **AT#PmUnSxxxx** is used to set the signal levels at the Endpoint defined by PCN "m" (Parent Channel Number) and Unit ID "n" which have been defined as outputs. The variable xxxx is the decimal sum of the output settings per the chart below. An output will remain low until set high.

I/O Signal	Decimal Value when set high
P3.0	1
P3.1	2
P3.2	4
P3.3	8
P3.4	16
P3.5	32
P3.6	64
P3.7	128
P1.0	256
P1.1	512
P1.2	1024
P1.3	2048

CH4390 CONFIGURATION COMMANDS

Control and configuration of the CH4390 is accomplished through commands issued through the module's serial interface. Below is a list of the available commands.

COMMANDS:

A/ - Repeat Last Command: The A/ command causes the CH4390 to re-execute the last command it received.

Bx – Serial Port Baud Rate: The “B” command sets the data rate at which the serial interface will accept commands and send responses. The default value is 19,200 bps, x=4.

x=0	1200 bps
x=1	2400 bps
x=2	4800 bps
x=3	9600 bps
x=4	19,200 bps *
x=5	38,400 bps
x=6	57,600 bps
x=7	115,200 bps

Ix – Module Identifier: This command provides information on the connected module

x=0	Model Number
x=1	Firmware Revision
x=2	Manufacturer
X=3	Current value of VCC

Mx – Node Type: This command defines the module's network function.

x=0	Reserved
x=1	Endpoint (Sensor Node)
x=2	Router (Relay Node)
X=3	Network Coordinator (Hub)

Nx – Set Network ID: This command sets the RF module's Network ID. The Network ID of two modules must be the same for them to communicate.

x=0	Network ID 0
x=1	Network ID 1
x=2	Network ID 2
x=3	Network ID 3

Ux – Set Unit ID: this command sets the node address of the module. Each node in a network must have a unique Unit ID.

X = 1 to 65000

Px – Set Parent Channel Number: This command sets the Parent Channel Number (PCN) of the node. The PCN of the Router or Network Coordinator must be the same as the Child the Channel Number (CCN) of the lower level Router or Endpoint nodes with which it communicates. Other sub-networks may not use the same PCN.

X = 1 to 63

Kx – Set Child Channel Number: This command sets the Child Channel Number (CCN) of the node. The CCN of the Router or Endpoint must be the same as the Parent Channel Number (PCN) of the higher level Router or Network Coordinator nodes with which it communicates. Other sub-networks may not use the same CCN.

X = 1 to 63

AT&Dnnnn – Program Digital I/O: This command defines the 12 Digital I/O as either inputs or outputs. The “nnnn” represents the decimal sum of a 12-bit binary sequence, see below. Setting a bit to 1 defines the I/O as an output. In its default state The CH4390 has P3.0 to P3.7 set as outputs and P1.0 to P1.3 set as inputs, decimal sum 255.

I/O Signal	Decimal Value as Output
P3.0	1
P3.1	2
P3.2	4
P3.3	8
P3.4	16
P3.5	32
P3.6	64
P3.7	128
P1.0	256
P1.1	512
P1.2	1024
P1.3	2048

n=0000 All I/O lines to act as inputs

n=4095 All I/O lines to act as outputs

AT&I – Read Local I/O Value: This command causes the CH4390 to report the current value of all of the Digital I/O lines. The values will be reported as the sum of the decimal values as described below.

I/O Signal	Decimal Value when Input high
P3.0	1
P3.1	2
P3.2	4
P3.3	8
P3.4	16
P3.5	32
P3.6	64
P3.7	128
P1.0	256
P1.1	512
P1.2	1024
P1.3	2048

AT&On – Set Local I/O Value: This command sets the condition of the Digital I/O lines defined as outputs. The values are issued as a single decimal number as shown below.

I/O Signal	Decimal Value as Output
P3.0	1
P3.1	2
P3.2	4
P3.3	8
P3.4	16
P3.5	32
P3.6	64
P3.7	128
P1.0	256
P1.1	512
P1.2	1024
P1.3	2048

- n=0 Set All I/O lines low
- n=4096 Set All I/O lines high

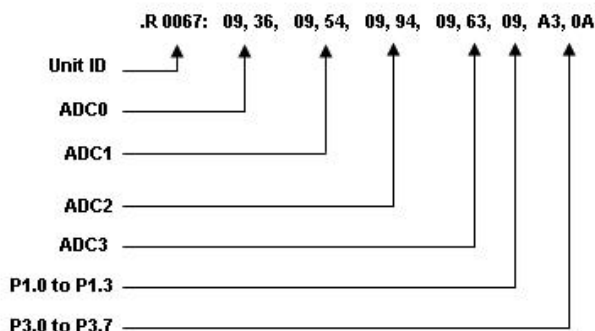
AT&V – Display Current Settings: This command causes the CH4390 to respond with a listing of its current configuration.

AT&W – Save Current Settings: The &W command causes the CH4390 to save the current configuration in NVRAM.

AT#Bn – Broadcast: The #B command causes the CH4390 to broadcast its wireless carrier on frequency “n.” Transmitting on a single frequency should only be done for test purposes. When “n” equals 0, the CH4390 broadcasts with the normal frequency hopping scheme. The CH4390 will discontinue broadcasting if any character is presented on TXD.

AT#PmUnR – Read Remote Sensor: This command causes the Network Coordinator to Read the values of all Digital I/O and Analog inputs from the remote node on PCN “m” with Unit ID “n.” The results are shown in Hexadecimal form as shown below.

OK (command was received by the local module)



AT#PmUnSx – Set Remote Output: This command sets the values of the remote Digital outputs. The values will be reported as a single decimal number as described for the AT&Dn command.

- n=0 All I/O lines set low
- n=4096 All I/O lines set high

AT#R – Receive Broadcast – This command allows the CH4390 to receive a broadcasted message and to present that message on the /RXD line of the serial interface.

Table 1: CH4390 Modem Responses

Verbose Result Code	Description
<CR><LF>OK<CR><LF>	Command executed successfully
CR><LF>ERROR<CR><LF>	Command could not be executed

Figure 2: CH4390 Mechanical Specifications

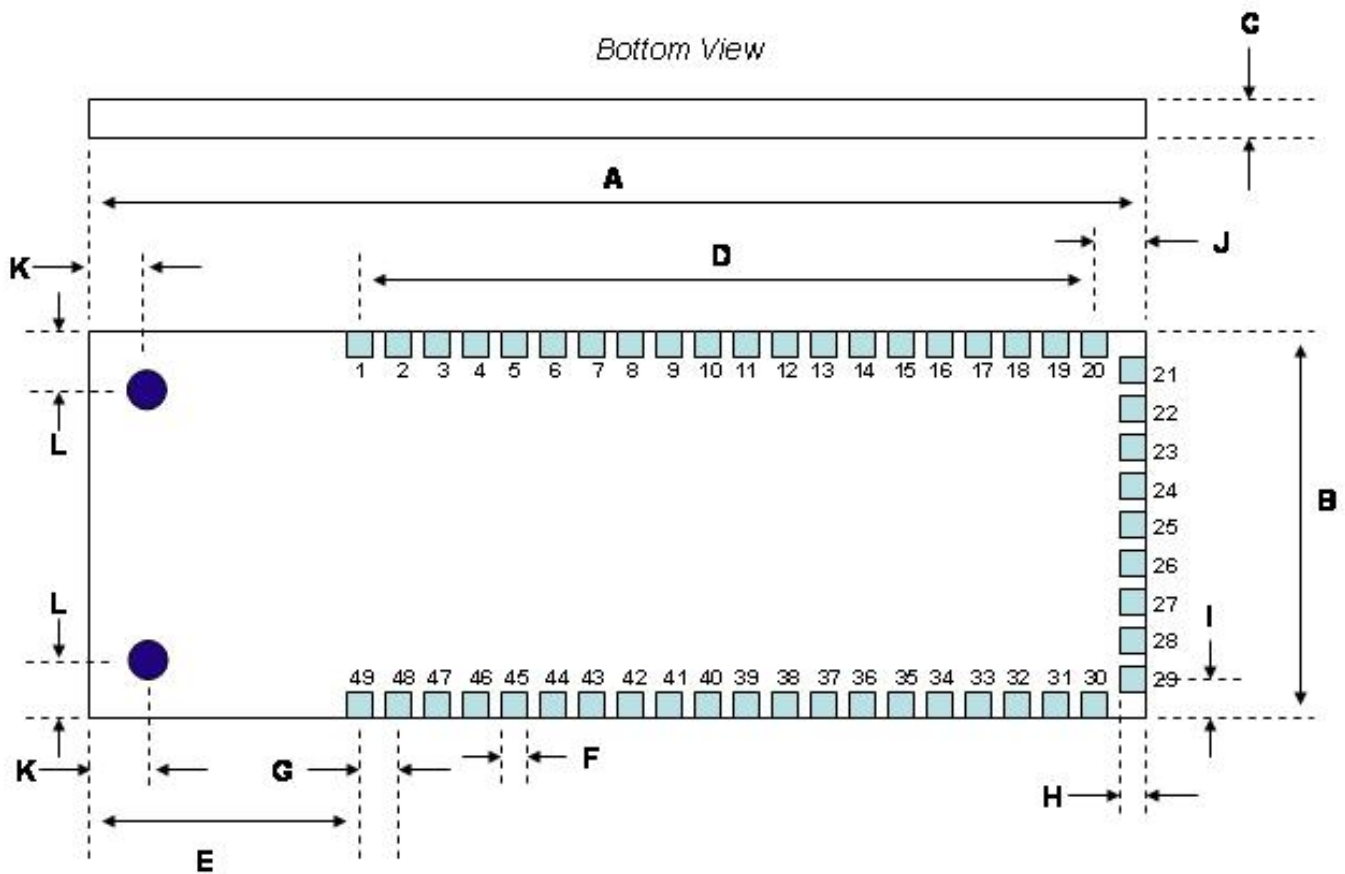


Table 2: CH4390 Mechanical Specifications

DIMENSION	TYP	DESCRIPTION
A	50.0	Module Length in millimeters
B	20.0	Module Width in millimeters
C	5.0	Module Height in millimeters
D	38.0	Pad Row length in millimeters
E	9.0	Board Edge to Pad 1 or 49 in millimeters
F	1.5	Pad Width in millimeters
G	2.0	Pad Pitch in millimeters
H	1.5	Pad Depth in millimeters
I	2.0	Distance from Edge to Pad 21 or 29 in millimeters
J	3.0	Distance from Module Edge to Pad 20 or 30 in millimeters
K	3.0	Distance from End of Module to Mounting Hole in millimeters
L	3.0	Distance from Side of Module to Mounting Hole in millimeters

CH4390 SURFACE MOUNT SOLDERING INSTRUCTIONS

The CH4390 is subject to damage if over-exposed to heat during solder reflow operations. Following the soldering instructions below will ensure that the process of soldering the module to the board does not damage the modem.

- Absolute Maximum Temperature: 250° C
- Maximum Time at 235° C: 15 Seconds
- Maximum Time in reflow zone (217° C): 90 Seconds
- Maximum Preheat Dwell Time: 180 Seconds

Figure 3: Maximum Recommended Solder Temperature Profile

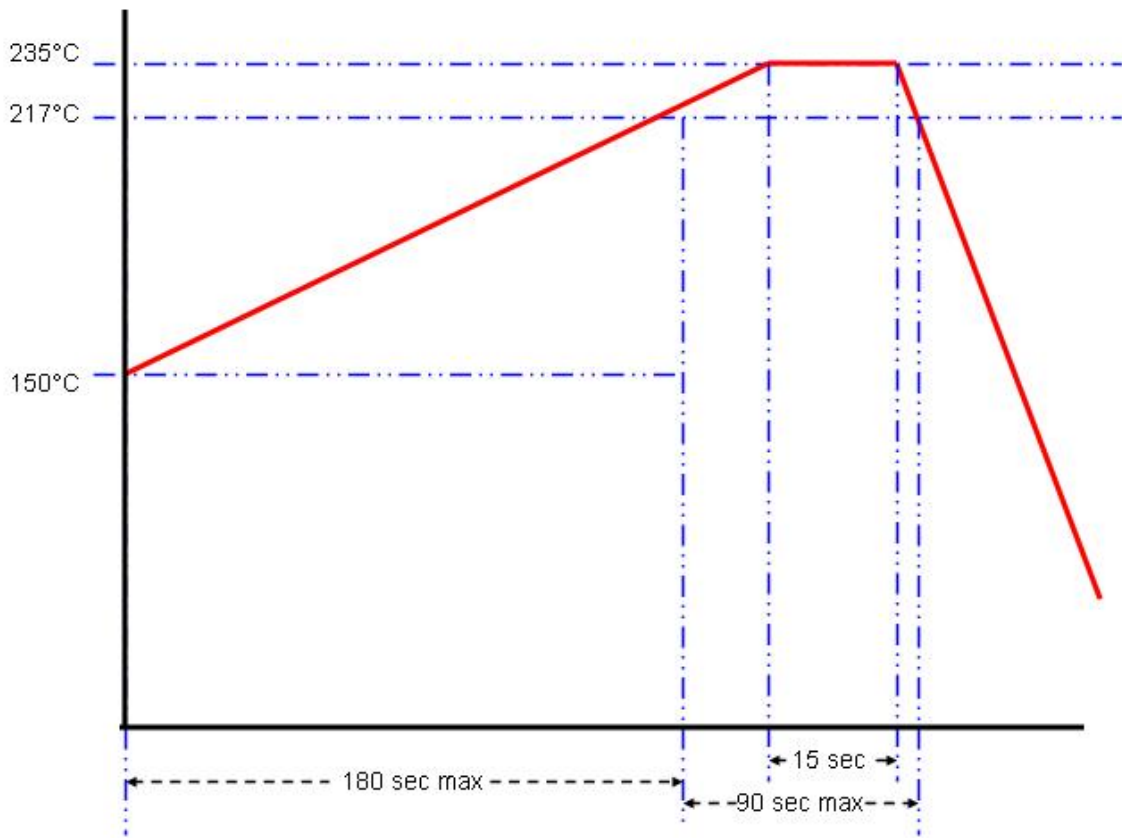
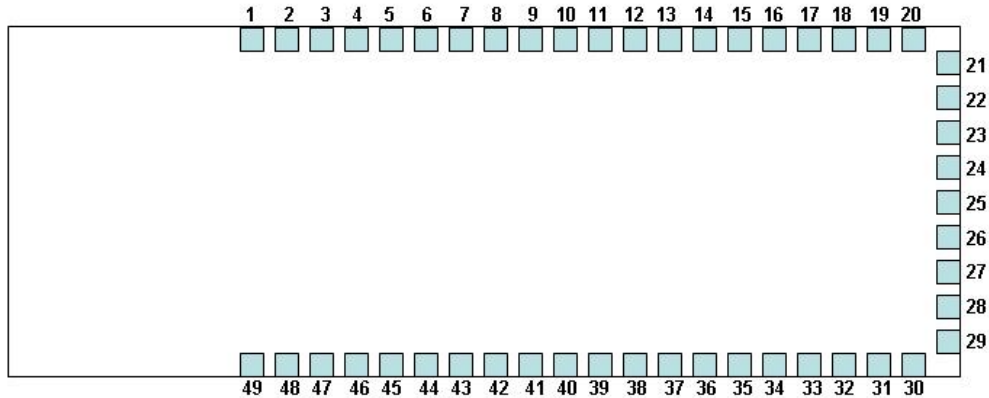


Figure 4: CH4390 Solder Pad Configuration

CH4390 Bottom View



CH4390 PAD DESCRIPTIONS

<u>PAD</u>	<u>SIGNAL</u>	<u>DESCRIPTION</u>
1-9	Ground	Each of these pads provides a connection to ground on the CH4390. All ground pads should be connected. A solid ground is essential for optimum performance.
10	VCC	This pad provides 3.3 Volt power to the CH4390. Cermetek recommends a 10 μ F Tantalum filter capacitor be placed in parallel with a 0.01 μ F ceramic capacitor between VCC and ground. The bypass capacitors should be placed as close to the VCC pin on the module as possible
11	TDO	reserved
12	TCLK	reserved
13	TMS	reserved
14	TCK	reserved
15	TEST	reserved
16	/RESET	This active low signal permits the host system to force the CH4390 to execute a hardware Reset.
17	VREF	reserved
18	ADC4	This is one of five analog inputs to the CH4390. Each analog input connects to a 12-bit Analog-to-Digital converter, 4096 steps. Full scale input is 2.5 Volts.
19	ADC3	This is one of five analog inputs to the CH4390. Each analog input connects to a 12-bit Analog-to-Digital converter, 4096 steps. Full scale input is 2.5 Volts.
20	ADC2	This is one of five analog inputs to the CH4390. Each analog input connects to a 12-bit Analog-to-Digital converter, 4096 steps. Full scale input is 2.5 Volts.
21	ADC1	This is one of five analog inputs to the CH4390. Each analog input connects to a 12-bit Analog-to-Digital converter, 4096 steps. Full scale input is 2.5 Volts.
22	ADC0	This is one of five analog inputs to the CH4390. Each analog input connects to a 12-bit Analog-to-Digital converter, 4096 steps. Full scale input is 2.5 Volts.

<u>PAD</u>	<u>SIGNAL</u>	<u>DESCRIPTION</u>
23	/RTS	This active low input signal presents Request To Send from the serial port to the CH4390 for flow control. The host system activates Request to Send when it has data to transmit. /RTS is a 5 volt tolerant input.
24	/RXD	The CH4390 presents data and command responses to the host system on the /RXD, Received Data, output.
25	/TXD	The host system presents commands to the CH4390 on the /TXD, Transmitted Data, input. /TXD is a 5 volt tolerant input.
26	/CTS	The CH4390 uses this active low output signal to activate Clear To Send on the serial port for flow control. The CH4390 activates Clear to Send when it has data to pass on the Received Data line.
27	P1.3	This is one of twelve programmable digital input/output signals to the CH4390. It is set has an input or output using the AT&D command. The default setting for P1.3 is as an input.
28	P1.2	This is one of twelve programmable digital input/output signals to the CH4390. It is set has an input or output using the AT&D command. The default setting for P1.2 is as an input.
29	P1.1	This is one of twelve programmable digital input/output signals to the CH4390. It is set has an input or output using the AT&D command. The default setting for P1.1 is as an input.
30	P1.0	This is one of twelve programmable digital input/output signals to the CH4390. It is set has an input or output using the AT&D command. The default setting for P1.0 is as an input.
31	P3.7	This is one of twelve programmable digital input/output signals to the CH4390. It is set has an input or output using the AT&D command. The default setting for P3.7 is as an output.
32	P3.6	This is one of twelve programmable digital input/output signals to the CH4390. It is set has an input or output using the AT&D command. The default setting for P3.6 is as an output.
33	P3.5	This is one of twelve programmable digital input/output signals to the CH4390. It is set has an input or output using the AT&D command. The default setting for P3.5 is as an output.
34	P3.4	This is one of twelve programmable digital input/output signals to the CH4390. It is set has an input or output using the AT&D command. The default setting for P3.4 is as an output.
35	P3.3	This is one of twelve programmable digital input/output signals to the CH4390. It is set has an input or output using the AT&D command. The default setting for P3.3 is as an output.
36	P3.2	This is one of twelve programmable digital input/output signals to the CH4390. It is set has an input or output using the AT&D command. The default setting for P3.2 is as an output.
37	P3.1	This is one of twelve programmable digital input/output signals to the CH4390. It is set has an input or output using the AT&D command. The default setting for P3.1 is as an output.
38	P3.0	This is one of twelve programmable digital input/output signals to the CH4390. It is set has an input or output using the AT&D command. The default setting for P3.0 is as an output.
39-49	Ground	Each of these pads provides a connection to ground on the CH4390. All ground pads should be connected. A solid ground is essential for optimum performance.

Table 3: CH4390 Electrical Specifications

Parameter	Minimum	Typical	Maximum	Units	Notes
VCC	3.0	3.3	3.7	Volts	If VCC exceeds the maximum rating, the CH4390 transmitter will shut down.
ICC		110		mA	During Transmission
		20		mA	While Receiving
Output Level			25	dBm	
Receive Sensitivity		-110		dBm	FSK modulation at 1200 bps
V _{OH}			2.6	Volts	/CTS and /RXD
V _{OL}			0.4	Volts	/CTS and /RXD
V _{IH}	2.31		5.5	Volts	/RTS and /TXD
V _{IL}	-0.3		0.99	Volts	/RTS and /TXD

Table 4: CH4390 Absolute Maximum Ratings

Parameter	Minimum	Typical	Maximum	Units	Notes
Storage Temperature	-40°	25°	85°	Celsius	
VCC			3.6	Volts	
V _{IH}	2.4	3.3	5.7	Volts	/RTS and /TXD
Operating Temperature	0°	25°	70°	Celsius	CH4390
	-40°	25°	85°	Celsius	CH4390ET

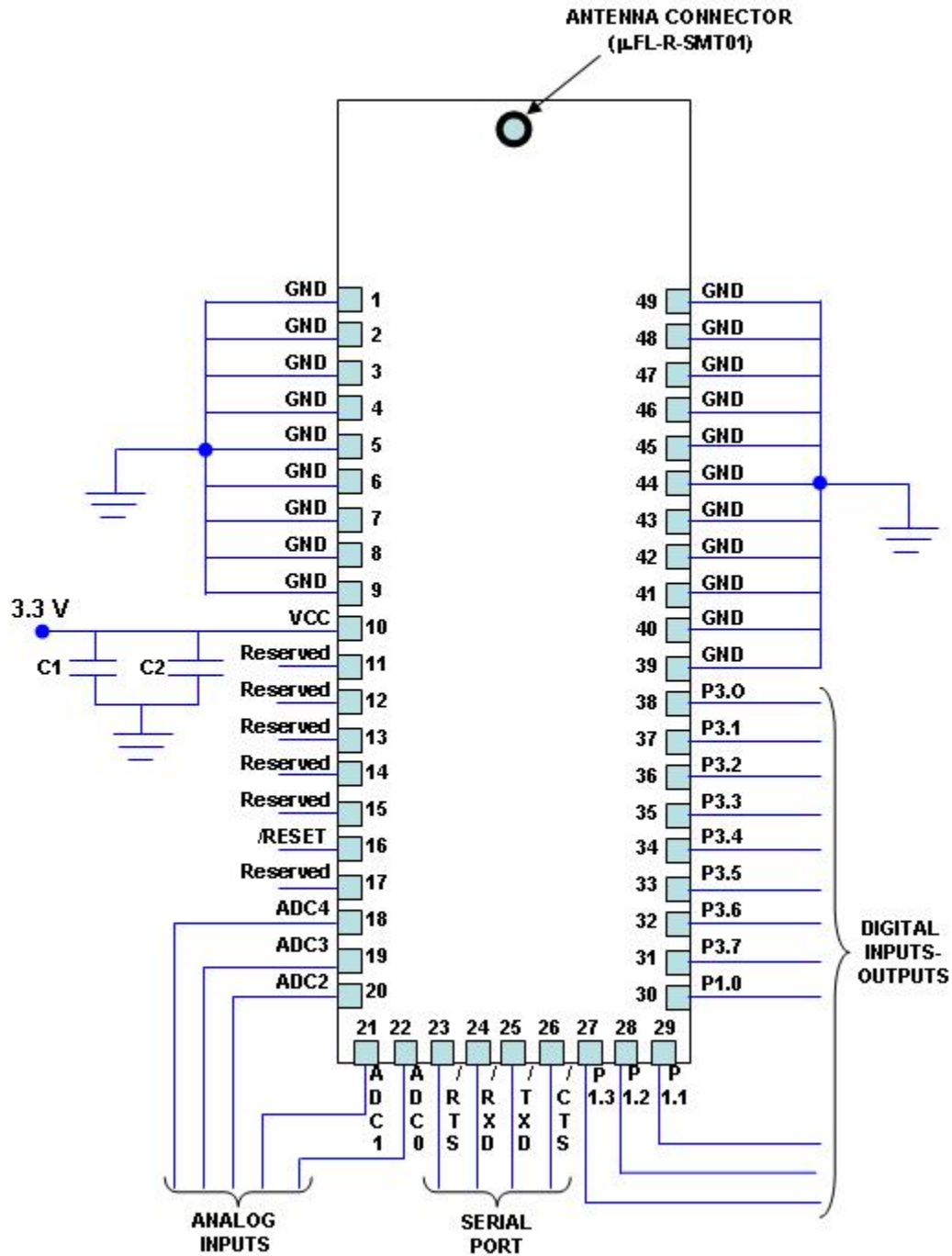
Model Numbers

Cermetek offers two variations of the CH4390. The variants differ only in their operating temperature range. Table 5 below lists the available CH4390 models.

Table 5: CH4390 Model Numbers

Model	Summary of Features
CH4390	900 MHz Frequency Hopping Transceiver; NVRAM; Operating Temp 0°C to 70°C
CH4390ET	900 MHz Frequency Hopping Transceiver; NVRAM; Operating Temp -40°C to 85°C

CH4390 Typical Connection Diagram



Notes:

- 1) The designated Antenna xxxx must be used or the Modular certification of the CH4390 will be invalidated.
- 2) Capacitors C1 (0.01 μFd) and C2 (10 μFd) must be mounted as close to Pin 10 of the module as possible.
- 3) It is important that all ground pins be connected to a solid ground to prevent noise accumulation.

4) FCC PART 15 REGULATIONS

The CH4390 has earned modular approval as described in FCC Part 15 rules. This certification means that no further transmitter certification is needed for systems using the CH4390. However, there are some restrictions on the use of a transmitter with modular approval.

- 1) Modular approval applies only to the transmitter. The final system may require verification of unintentional radiation.
- 2) When designing the CH4390 into a system, the designer must follow the application circuit in this data sheet and use a listed Antenna. Cermetek must approve for any changes or modifications to the application circuit. Failure to receive approval for modifications from Cermetek could void certification of the end product.
- 3) Any modification to the CH4390 after it leaves the factory is in violation of FCC Rules.
- 4) FCC rules require systems using the CH4390 to permanently affix an appropriate label on the outside of the finished equipment. The label must be clearly visible and include the information below.

Contains Transmitter Module

FCC ID: B46-CH4390

WARNING:

This device complies with part 15 of the FCC Rules. Its operation is subject to the following conditions:

- (1) This device may not cause harmful interference.
- (2) This device must accept any received interference including interference that may cause undesired operation.

Warning: RF Exposure

The CH4390 is approved for mobile and base station applications. A minimum of 20 centimeters should be maintained between the antenna and the equipment operator. To ensure compliance, operation at distances closer than those defined is not recommended.

The Warning message below must be included in the User's Manual for the end product.

“To comply with FCC RF exposure requirements for mobile transmitting devices, this transmitter should only be used or installed at locations where there is at least a 20 cm separation distance between the antenna and all persons. “

Cermetek reserves the right to make changes in specifications at any time and without notice. The information furnished by Cermetek in this publication is believed to be accurate and reliable. However, Cermetek assumes no responsibility for its use, or for any infringements of patents or other rights of third parties resulting from its use. No license is granted under any patents or patent rights of Cermetek.

Cermetek provides the user with a FCC (USA) Approved module. However, Cermetek does not have influence over nor knowledge of the specific user application environment. Therefore, for FCC Approved or Approvable devices, the user assumes all risk for maintaining compliance to registration.

Printed in U.S.A